

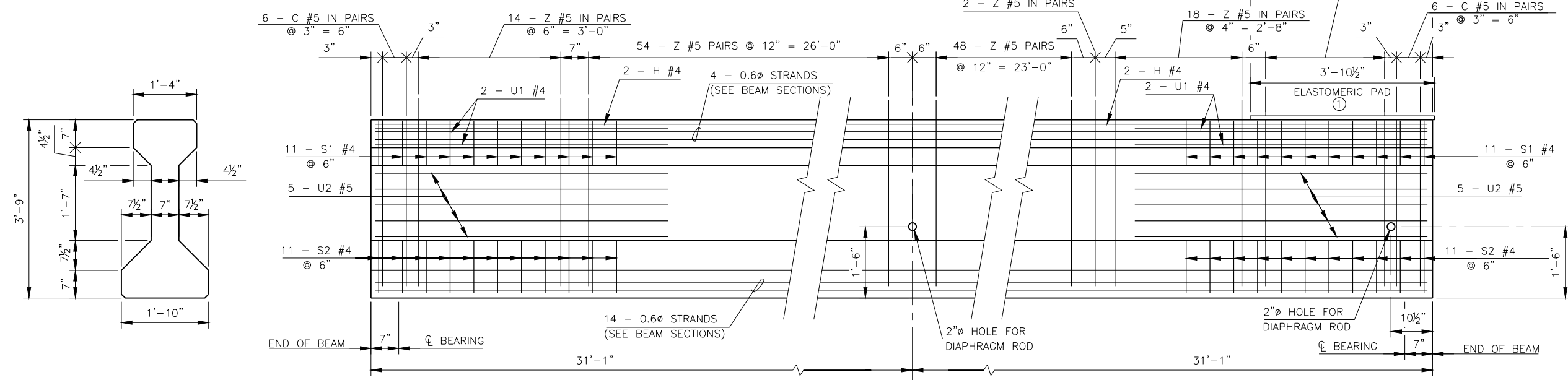
HALF PLAN AT ABUTMENT

HALF PLAN AT PIER

PRESTRESSED CONCRETE BEAM NOTES
 COMPRESSIVE STRENGTH
 PROVIDE CONCRETE WITH A COMPRESSIVE STRENGTH OF 5,250 P.S.I. AT TRANSFER OF PRESTRESS AND 7,000 P.S.I. AT 28 DAYS.
 STRAND TYPE
 PROVIDE LOW-RELAXATION STRANDS HAVING A NOMINAL DIAMETER OF 0.6" WITH ULTIMATE TENSILE STRENGTH OF 270 K.S.I.

① PROVIDE ELASTOMERIC PAD WITH A 50 DUROMETER HARDNESS AND CONSISTING OF A SINGLE LAYER 5/8" THICK X 1'-4" WIDE X 3'-10 1/2" LONG. EXTEND PAD 1/2" BEYOND THE END OF THE BEAM AS SHOWN.

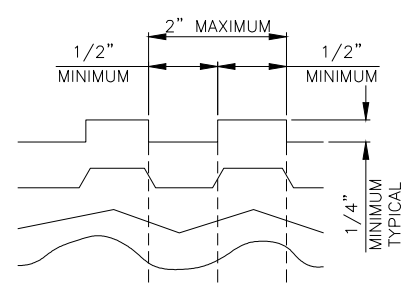
NOTE:
 FOR EMBEDDED SOLE PLATE DETAILS, SEE SHEET 36.



END VIEW

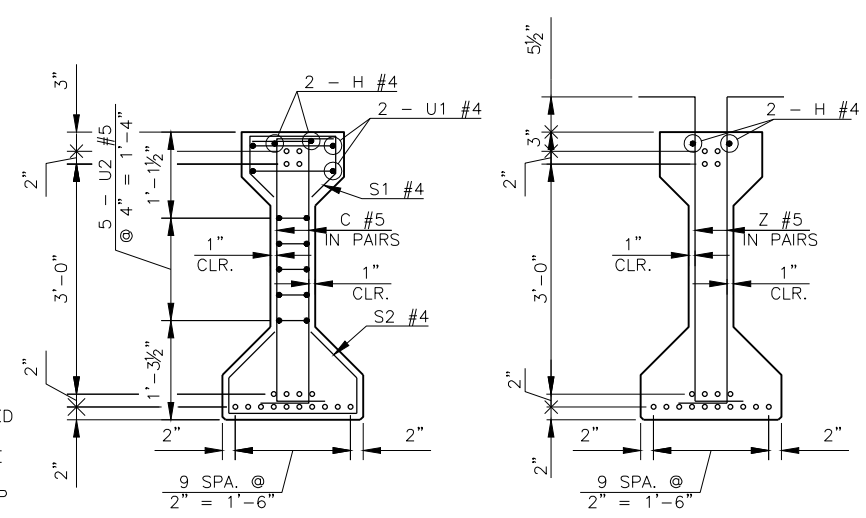
HALF ELEVATION AT ABUTMENT

HALF ELEVATION AT PIER



INTENTIONALLY ROUGHENED SURFACE DETAILS

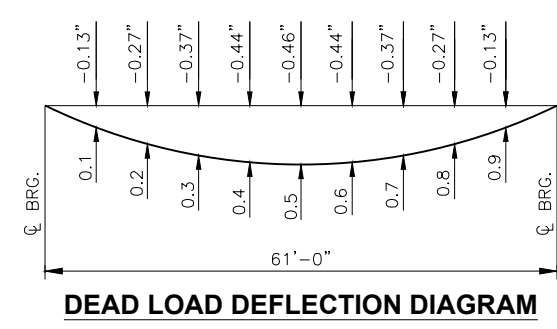
TOP SURFACE OF P.C. BEAMS SHALL BE INTENTIONALLY ROUGHENED TO A MINIMUM HEIGHT OF 1/4" OVER A MAXIMUM PITCH OF 2" MEASURED LONGITUDINALLY ALONG THE LENGTH OF THE BEAM. THE CREST AND TROUGH ASSOCIATED WITH THE HEIGHT SHALL NOT BE LESS THAN 1/2" AND SHALL EXTEND THE FULL WIDTH OF THE TOP FLANGE. PRODUCE THE ROUGHENED SURFACE BY USING A SPECIAL TROWEL TO FORM ONE OF THE SURFACES SHOWN IN THE DETAILS, BY CLEANING THE CONCRETE SURFACE WITH A STIFF WIRE BRUSH (OR BLASTING) TO THE EXTENT THAT AGGREGATE IS EXPOSED TO A HEIGHT OF 1/4", OR BY ANOTHER APPROVED METHOD. THE METHOD SHALL BE SUBMITTED FOR APPROVAL BY THE ENGINEER. REPAIR ANY DAMAGE TO THE REINFORCEMENT'S EPOXY COATING BEFORE PLACEMENT OF DECK CONCRETE.



END SECTION

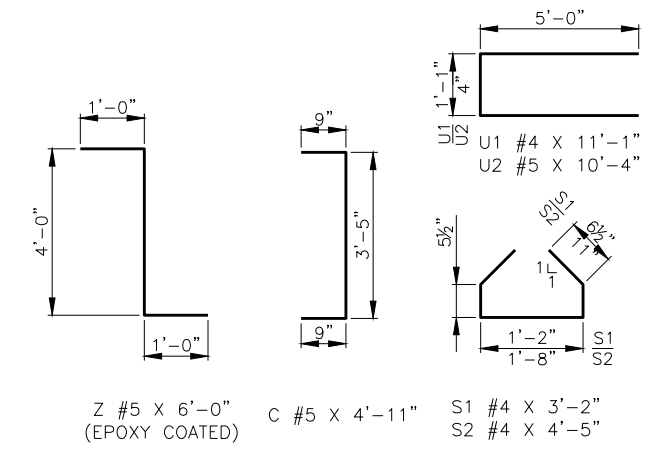
CL SECTION

BEAM SECTIONS
 (18 - 0.6" STRANDS)



DEAD LOAD DEFLECTION DIAGRAM
 (SPAN NO. 1 & 3)

NOTE:
 THE DEAD LOAD DEFLECTION SHOWN ABOVE AT THE TENTH POINTS ARE THE INITIAL DEFLECTIONS DUE TO DECK SLAB + HAUNCH + DIAPHRAGMS + CONCRETE PARAPET. IT DOES NOT INCLUDE THE BEAM WEIGHT OR FUTURE WEARING SURFACE.



TYPE III P.C. BEAM BAR BEND DETAILS

DESIGN	J.W.H.	SH34 OVER S. PERSIMMON CREEK	WOODWARD COUNTY
DRAWN	R.A.P.	BRIDGE A	
CHECKED	J.W.H.	P.C.B. DETAILS - TYPE III SPAN NO. 1 AND 3	
APPROV.	T.A.C.		
SQUAD	CEC		
		JOB PIECE NO. 28825(04)	SHEET NO. 35